

## **WELCOME TO NELSON**

Thank you for your interest in the Nelson area. We are confident that you will be impressed with the business and lifestyle opportunities that exist in our growing and vibrant region.

Since incorporation in 1897, Nelson has developed into a rich, diverse community, with a sophistication not often found in a small town environment. This fact, coupled with the incredible geographical beauty of the area, makes Nelson an ideal place to live and raise a family, work, own a business, or retire if that's where you are in life. Nelson ranked behind only Vancouver and Victoria as the most liveable city in the entire province.

Nelson has a population of 9,258 and a trading area of approximately 60,000. The community is blessed with a true entrepreneurial spirit. In 2009, the City of Nelson issued over 1200 business licenses while the Chamber of Commerce reached an all-time high of close to 500 members.

Nelson and area is one of BC's richest resource regions and our tradition reaches back over 100 years. More recently Nelson's excellent climate, location, and quality workforce have helped create a robust and diversified economy including tourism, education, health services, manufacturing, and technology. Nelson is recognized as the shopping capital of the Kootenays, boasting a vibrant heritage downtown with a tremendous number of unique retail shops, restaurants and coffee houses. Historic Baker Street is truly an adventure in itself. In addition to the downtown core, Chahko Mika Mall boasts a number of national stores for anchor tenants rounding out Nelsons shopping opportunities.

Residents take pride in our education institutions, first class recreation facilities, active volunteering and community lifestyle. Over two hundred and twenty clubs and societies are registered within the City. These volunteer organizations are the bedrock of Nelson, contributing in untold ways to the community fabric. Whether arts and culture, sports and recreation, or a service club, Nelson's volunteer organisations are simply amazing. It would be easy to state that, Nelson has as fine a citizenry as can be found anywhere.

Among Nelson's municipal facilities are a recently renovated and expanded aquatic and fitness centre and a brand new multi-use arena, which will accompany our older Civic Arena in providing 2 ice surfaces for hockey, figure skating and speed skating. Nelson also has a curling rink, waterfront soccer fields, baseball and slo-pitch diamonds, an 18 hole golf course located only minutes from the downtown core., and beautiful parks,

Relocation is always a challenge, but it should also be looked at as a new adventure, one that doesn't need to be difficult. To be sure, the Nelson Economic Development Partnership is committed to helping our new citizens make their move to Nelson as smooth as possible...for more information contact;

*Tom Thomson; Executive Director Nelson and District Chamber of Commerce  
250 352 3433, or email [tom@discovernelson.com](mailto:tom@discovernelson.com)*

For other related community and regional details, we encourage you to visit the following web sites:

[www.discovernelson.com](http://www.discovernelson.com) • [www.nelson.ca](http://www.nelson.ca) • [www.rdck.bc.ca](http://www.rdck.bc.ca) • [www.investkootenay.com](http://www.investkootenay.com)

## Demographics

<b>Population</b>		
<b>Age Group</b>	<b>Population</b>	<b>% Distribution</b>
Under 18 years	3,390	20.3%
18 – 34 years	3,290	19.7%
35 – 54 years	5,395	32.3%
55 – 74 years	3,425	20.5%
75 years and over	1,205	7.2%
Total – Age Groups	16,705	100.0%
% Change 2001 - 2006	-0.6%	
Median Age	42.5	

<b>Nelson</b>	<b>9,258</b>
<b>Rural Areas</b>	<b>7,446</b>

### Household Income (2006)

Number of Households in 2006	7,360
Median Household Income in 2006	C \$44,419

### Household Income Group

	<b>Number</b>	<b>% Distribution</b>
Under - \$35,000 CDN	2,775	37.7%
\$35,000 CDN - \$49,999 CDN	1,320	17.9%
\$50,000 CDN - \$74,999 CDN	1,480	20.1%
\$75,000 CDN and over	1,775	24.1%

Source: Statistics Canada, Census, 2006

### Average Housing Values

Number of Single Family Homes	\$318,156
Multi Family Homes	\$243,064

### Taxes and Charges on a Representative House

Nelson	\$3,178
--------	---------

Source: Ministry of Community Development, 2008 & 2007

## Labour Force

### Labour Force Participation Rate (15-64 years)

Male	70.9%
Female	61.2%
Total	66.1%

### Civilian Labour Force

Unemployment Rate	5% (2006)
-------------------	-----------

### Labour Force by Sector

	Total Number Employed	% of Total Employed Persons
Forestry & Logging	95	1.2%
Mining and Oil & Gas	45	0.6%
Construction	520	6.4%
Manufacturing	575	7.1%
Transportation, Warehousing & Public Utilities	455	5.6%
Wholesale Trade	165	2.0%
Retail Trade	1,435	17.7%
Services	3,750	46.2%
Finance, Insurance, Real Estate & Leasing	335	4.1%
Government	615	7.6%
Total	8,110	100.0%

Source: Statistics Canada, Census, 2006

### Labour Force by Occupation

	Total Number Employed	% of Total Employed Persons
Administrative/Clerical	1,210	14.9%
Executive	60	0.7%
Farming/Forestry	125	1.5%
Labourers/Handlers	840	10.3%
Machine Operators	370	4.5%
Management	570	7.0%
Precision Production	205	2.5%
Professional	705	8.7%
Protective Services	95	1.2%
Sales	770	9.5%
Services	2,260	27.5%
Technician	785	9.6%
Transportation and Public Utilities	150	1.8%
Total	8,145	100.0%

## Top Employers

Sector	Company	# Employees <sup>1</sup>
Education	Selkirk College (Castlegar, Trail, Nelson, Grand Forks, Kaslo, Nakusp)	575
Education	School District #8	333 teachers; 43 vice principals, principals and district administrative staff; TOTAL: 376
High Tech	Pacific Insight Electronics	400+
Government	Regional District of Central Kootenay (Nelson, Creston, Kootenay Lake)	220
Retail	Walmart	200
Highway Maintenance	Yellowhead Road & Bridge Ltd. (West Kootenay, Nelson)	190
Hospitality & Tourism	Martin Hotel Group	158
Retail	Canada Safeway	150
Hospitality & Tourism	Whitewater Ski Resort	125
Retail	Save-On-Foods	120
Government	City of Nelson	102
Retail	Maglio Building Centre (Nelson & Trail)	90
Retail	Kootenay Co-Op	65
Financial	Nelson & District Credit Union (Nelson, Rossland, Crawford Bay)	52

<sup>1</sup> Not all school district and RDCK employees reside in Nelson or immediate area.

Source: *Kootenay Business Magazine*; UBCM website (<http://www.civicnet.bc.ca/siteengine/activepage.asp>), 2009

### Workforce Education Attainment (25-64 Years of Age)

Less than High School Diploma	1,060	12 %
High School Diploma Only	2,565	28 %
Apprenticeship/Trades Certificate/Diploma	1,300	14 %
College/University Certificate/Diploma	2,175	24 %
University Bachelors Degree	1,195	13 %
University Medical/Dentistry/Optomety Degree	90	1 %
University Graduate Degree/Certificate	730	8 %

Source: *Statistics Canada, Census, 2006*

### Economic Dependencies

Public Sector	28%
Transfer Payments	18%
Forestry	9%
Other Non-Emp.	17%
Construction	10%
Tourism	7%
Other Basic	5%
Mining	2%
High Tech	4%
Agriculture	1%

Source: BC Stats Economic Dependencies, 2006

## Transportation

### Distance to Major Centres

Metro Area	Kilometres	Miles
Kelowna, BC	338	211
Victoria, BC	695	434
Vancouver, BC	657	410
Calgary, Alberta	624	390
Edmonton, Alberta	936	585
Portland, Oregon	829	518
Seattle, Washington	688	402
Spokane, Washington	237	148

Source: NEDP Nelson Profile

### Major Carriers / Trucks

No. of Common Carriers Serving the Area	5
No. of Common Carriers with Local Terminals	5

Source: Invest BC

## Closest Commercial Airports

### Castlegar Airport

Website	<a href="http://www.castlegar.ca/devserv_air.htm">www.castlegar.ca/devserv_air.htm</a>
Hub Status	Regional

Distance from Community	42 kilometers
No. of Runways	1
Runway Lengths	1,615 metres, 5329.5 ft
Carriers - Passenger	Air Canada Jazz, Highland Helicopters, High Alpine Air Services, Inc.
No. of days Closed due to Inclement Weather in the Last 3 Years	6
Flights to Largest Cities Served	Weekly Non-stop flights
Calgary	7
Vancouver	19

### **Nelson Airport**

Distance from Community	Located in Nelson
No. of Runways	1
Runway Lengths	940 metres, 3,100 ft.
Carriers - Passenger	High Alpine, Kokanee Helicopters

### **Kelowna Airport**

Website	<a href="http://www.kelownairport.com">www.kelownairport.com</a>
Hub Status	International
Distance from Community	340 kilometers, 211 miles
Hours of Operation	4:30 am – 11:30 pm
No. of Runways	1
Runway Lengths	2,225 meters, 7342.5 ft.
Carriers - Passenger	Air Canada, Horizon Air, WestJet Airlines, Regional1, Central Mountain Air
Carriers - Charter	Carson Air, Northwestern Air
Carriers - Air Cargo	Air Canada, Horizon Air, WestJet Airlines, Central MountainAir
No. of days Closed due to Inclement Weather in the Last 3 Years	0
Total Weekly Non-Stops to All Cities Served	224
Flights to Largest Cities Served	Weekly Non-stop Flights
Calgary	70
Edmonton	35
Seattle	28
Vancouver	84
Victoria	7

## Canadian Rockies International Airport

Website	<a href="http://www.flycanadianrockies.com">www.flycanadianrockies.com</a>
Hub Status	International
Distance from Community	229 kilometers, 142 miles
Hours of Operation	24 hours / 7 days
No. of Runways	1
Runway Lengths	1,829 meters
Carriers - Passenger	Air Canada, Pacific Coastal, Delta
Carriers – Charter	Kootenay Airways
No. of days Closed due to Inclement Weather in the Last 3 Years	1
Total Weekly Non-Stops to All Cities Served	56
Flights to Largest Cities Served	Weekly Non-stop Flights
Calgary	35
Vancouver	21

Canadian Border Services Information	
Canadian Rockies Airport	(250)417-2223
Kingsgate (south of Yahk) 24 yrs.	(250) 424-5292
Eastport (US side)	(208) 267-3966
Rykerts (south of Creston) 8am – 12am Oct. 31-April 23 7am-11pm April 24-Oct 30	(250) 428-2575
Nelway (south of Salmo) 8am-12am	(250)357-9940
Port Hill (US side)	(208) 267-5309
Waneta (south of Fruitvale) 9am-5pm	(250) 367-9656
Paterson (south of Rossland) 24hrs. US side 8am-12am	(250) 362-7341
Cascade (south of Christina Lake) 8am-12am	(250)447-9418

Canadian Border Services Information (1-800-461-9999)

## Taxation

### Municipal Tax Rate (2008)

Business	10.60822
Light Industry	10.60822
Major Industry	0
Residential	4.07194
Utility	30.14172

\*Dollars of tax per \$1,000 taxable value

Source: UBCM website (<http://www.civicinfo.bc.ca/81.asp>), 2009

### Corporate Income Tax / Franchise Tax

Federal	Small Business	Mfg	Non-Mrg
Rate (range)	11.0%	19.0%	19.0%
Formula (e.g. Sales, Property & Payroll)	N/A	N/A	N/A
Accelerated Depreciation Permitted	Yes	Yes	Yes
Provincial			
Rate (range)	3.5%	11.0%	11.0%
Formula (e.g. Sales, Property & Payroll)	Sales & Payroll	Sales & Payroll	Sales & Payroll
Accelerated Depreciation Permitted	No	No	No
<b>Total Federal and Provincial Corporate Income Tax</b>	<b>14.5%</b>	<b>30.0%</b>	<b>30.0%</b>

Source: InvestBC, 2009

### Personal Income Tax Rate (Range)

	Federal	Provincial (State)	Local
Capital Gains	7.50%-14.50%	2.53%-7.35%	N/A
Earned Income	15.00%-29.00%	5.06%-14.70%	N/A
Unearned Income (e.g. Dividend)	0.00%-14.55%	0.00%-3.92%	N/A

Source: InvestBC, 2009



<b>Sales / Use Tax Rate</b>		
	<b>Rate</b>	<b>Notes</b>
Federal (Goods and Service Tax) -- GST	5.0%	GST on business inputs is fully recoverable
Local	N/A	British Columbia has no local sales tax
Provincial (State) Sales Tax -- PST	7.0%	Exemptions include: production machinery and equipment, direct materials, catalysts, reagents, software development equipment, construction labour
Total (Effective Combined Rate) Business	7.0%	GST on business inputs is fully recoverable

*Source: InvestBC, 2009*

<b>Telephone Subject to Sale / Use Tax</b>		
<b>Type</b>	<b>Rate</b>	<b>Notes</b>
Local	7.0%	GST is fully recoverable
Long Distance In Province	7.0%	Toll free inbound service is tax-exempt. GST is fully recoverable.
Long Distance out of Province	7.0%	Toll free inbound service is tax-exempt. GST is fully recoverable.

*Source: InvestBC, 2009*

<b>Sales Tax Rate by Utility</b>		
	<b>Rate</b>	<b>Notes</b>
Electric Power	7.0%	GST is fully recoverable
Natural Gas	7.0%	GST is fully recoverable
Fuel Oil	7.0%	GST is fully recoverable
Water	0%	
Sewer	0%	
Hazardous Waste	7.0%	GST is fully recoverable

*Source: InvestBC, 2009*

<b>Machinery &amp; Equipment Subject to Sale / Use Tax</b>		
<b>Type</b>	<b>Rate</b>	<b>Notes</b>
Production	0%	
Non-Production	7.0%	Equipment used directly in software development is tax-exempt. GST is fully recoverable.
Pollution Control	0%	GST is fully recoverable.
Office Furniture / Fixtures / Equipment	0%	GST is fully recoverable.

*Source: InvestBC, 2009*

### Sales / Use Tax on Tangible Property

Type	Rate	Notes
Office Building Construction Materials	7.0%	GST is fully recoverable.
Industrial Building Construction Materials	7.0%	GST is fully recoverable.
Manufacturers' Raw Materials	0%	GST is fully recoverable.
Standard Software	7.0%	GST is fully recoverable.
Custom Software	7.0%	GST is fully recoverable.

Source: InvestBC, 2009

### Sales / Use Tax on Intangible Property

Type	Rate	Notes
Accounts Receivable	0%	
Capital Stock	0%	
Stock / Bond Transaction Fee	0%	

Source: InvestBC, 2009

## Payroll Costs

### Payroll Taxes

Workers Compensation		Notes
Average Cost for All Industries per \$100 Payroll	C \$1.90	Rates set by employer's business activity. Applies up to maximum gross earnings of C \$62,400 per year. There is no separate rating for office occupations in British Columbia – the applicable industry rating applies to all workers.
Average Rate for Office Workers per \$100 Payroll	C \$0.30	Rates for Business Services range from \$0.08 - \$0.70 per \$100 of payroll (average \$0.30). Applies up to maximum gross earnings of C \$62,400 per year.
Maximum Weekly Benefit	C \$808.16	Maximum per employee set at 90% of average net earnings (after deductions for income taxes, Canada Pension Plan & Employment Insurance), up to a maximum wage of C\$62,400 per year.

Source: InvestBC, 2009

### Unemployment Insurance (Employment Insurance)

Taxable Base	Gross Payroll	Up to a gross per worker salary of C \$39,000 per year.
Percentage Rate (Employer Premium)		
Average Among Existing Employers	2.618%	Maximum annual contribution per worker is C\$1,021. Employees also contribute at a rate of 1.87% up to an annual maximum of C\$729.
Average Among New Employers	2.618%	Maximum annual contribution per worker is C\$1,021. Employees also contribute at a rate of 1.87% up to an annual maximum of C\$729.
Maximum Weekly Benefits	C \$413.00	

Source: InvestBC, 2009

### Utilities

#### Water & Sewer Water Availability

% Population Increase Served from the Source

Major Sources	5 Mile Creek Selous Creek Anderson Creek
---------------	--

Source: Invest Kootenay Research

#### Water Treatment

Name of Provider	City of Nelson
Rated Capacity (mgd)	About 3.5 m.g.d.
Average Daily Demand (mgd)	1.3 to 1.5 m.g.d.
Peak Demand (mgd)	3.8 m.g.d. counting all 3 intakes
Chemical Breakdown of Water	Being done by Cantest Laboratories \$1,500
Water Connection Fee	Construction fee \$1,000 or cost

Source: Invest Kootenay Research

#### Sewer Treatment

Name of Provider	City of Nelson Sewage Treatment Plant
Average Daily Demand (mgd)	985,000 gallons/day
Peak Demand (mgd)	2.8 m.g.d
Rated Capacity (mgd)	1.5 m.g.d. \$1,500 (single family dwelling)
Sewer Connection Fee	Construction (single family dwelling) \$1,000 or cost  Sewer upgrade \$1,200

Source: Invest Kootenay Research

### Electric Power

Name of Company	Nelson Hydro (250) 352-5511
Communities Served	Nelson & surrounding rural areas

### Average Cost per kWh - \$CDN (2004)

#### Commercial Electricity Rates

Small (25 kW & 20,000 kWh)	8.26 ¢
Large 1 (400 kW & 2,000,000 kWh)	5.60 ¢

Source: Invest Kootenay Research, 2009

### Natural Gas

Name of Provider	Terasen Gas 1-888-224-2710
Rate Territory	Inland

### Firm Contract Rates (2003)

Type of Customer	General Firm Service (Rate Schedule 5)
Basic Charge (per month)	C \$553.00
Administration Fee (per month)	N/A
	Per Thousand Cubic Feet (Mcf)
Demand Charge	C \$12.63
Delivery and Gas Charge	C \$7.90

Source: Invest BC, 2009

### Landfill & Waste Management

Nearest Licensed Hazardous Waste Disposal Site	There are no hazardous waste disposal sites in British Columbia.
No. of Licensed Hazardous Waste Haulers Serving the Area	0

### Landfill Location(s)

Location	Capacity Left at Current Site	Plans for New Capacity
Central Landfill (Salmo)		No
Nelson Transfer Station	Unlimited	No

Source: Invest Kootenay Research, 2009

## Telecommunications

Number of Local Service Providers <sup>2</sup>	5
Name of Provider	Secure By Design, Shaw Internet, Specialty Electronics Ltd; Telus Internet Services; Uniserve.com
Address	See Yellow Pages

## Service Characteristics of the Office

Switch Technology	Digital
Fiber Service Provided	Yes
100 Mbps LAN Service Available	Yes
Monitoring	Remotely
ISDN Available	Yes
ADSL Available	Yes
ADSL Available from this Switch	Yes
Central Office on Self-Healing Fiber Ring	Contact Suppliers
Dual Feed from Two Separate Switching Offices	Contact Suppliers
Multiple Route Diversity	Yes

Source: Invest Kootenay Research

## Business Support Services

### Number of Business Support Services<sup>3</sup>

Computer Consultants / Graphic Design	19
Consultants	33
Welding	5
Temporary Employment	5
Bookkeeper / Income Tax Preparation	11
Accountants	6
General Contractors	93
Inspection / Appraisal	5
Engineering	9
Transportation / Delivery / Moving / Courier	13
Architect / Building Design / Drafting	5
Wholesale	9
Mechanical Contractors	25

Source: Invest Kootenay Research,

<sup>2</sup> Note: For a more accurate assessment, each supplier should be contacted and a separate profile compiles. Those answers shown reflect the best available of at least one of the suppliers.

<sup>3</sup> Note that Nelson has a very high small business formulation rate: Approx 1200 businesses

## Quality of Life

### Climate

Average Daily Temperature (Celsius)	High	Low	Average
January	0.2	-7.1	-3.7
July	28	10.1	19.1
Average Annual Rainfall	680.0mm		
Average Annual Snowfall	173.2cm		
Average Annual Windspeed (kph)	N/A		
Weather Station Elevation	457.2m		
Weather Station Name	South Slocan		

Source: Environment Canada, 2005

### Culture and Recreation

Top Annual Events	Date(s)
Kootenay Coldsmoke Powder Festival	February
Whitewater Winter Beach Party Bash	April 10
Nelson High School Music Festival	May 9 -10
Kaslo May Days	May 16 – 18
Cottonwood Outdoor Market (Saturday)	May 2 – October 17
Farmers Market (Wednesday)	June 23 – September 23
Canada Day Community Celebration Lakeside Park	July 1
Artwalk	July 1 – September 30
Toad Rock Motorcycle Rally	July 3 – 5
Nakusp Music Festival	July 17 – 19
Kaslo Jazzfest	August 1 -2
Shambala	August 7 – 10
Queen City Cruise	September 11 -12
Hills Garlic Festival	September 13
Harrop Harvest Festival	September 13
Country Christmas Fair	November
Kootenay Artisans Christmas Market	November
Christmas on Baker	December

Source: Invest Kootenay Research, 2009

## **MEDIA**

### **NEWSPAPERS**

Nelson Daily News	Phone: 250-352-3552	<a href="mailto:news@nelsondailynews.com">news@nelsondailynews.com</a>
The Express (weekly)	Phone: 250-354-3910	<a href="mailto:express@expressnews.bc.ca">express@expressnews.bc.ca</a>
Nelson Star (weekly)	Phone: 250 352-1890	<a href="mailto:publisher@nelsonstar.com">publisher@nelsonstar.com</a>
Pennywise (weekly) - classified	Phone: 250-352-2602	<a href="mailto:info@pennywiseads.com">info@pennywiseads.com</a>

### **RADIO**

Mountain FM	Phone: 250-352-1902
All Hit KBS	Phone: 250-352-5510
Canadian Broadcasting Corp.	Phone: 250-352-1642
Kootenay Co-op Radio	Phone: 250-352-9600

### **TELEVISION**

Canadian Broadcasting System (CBC)	Phone: 250-352-1642	
Global TV	Phone: 250-352-6068	<a href="mailto:dcaverly@chbc.com">dcaverly@chbc.com</a>
Shaw Cable (Community Television)	Phone: 250-354-4200	<a href="mailto:Kootenay.shawtv@sjrv.ca">Kootenay.shawtv@sjrv.ca</a>

## **EDUCATION**

### **School District #8 (Public) Education**

1 Senior Secondary  
1 Junior Secondary  
1 Elementary/Secondary  
8 Elementary Schools  
1 Outreach School  
1 Distance Education School (DESK)  
1 Kootenay Lake Learning Centre (gr 10-12)  
Ph: (250) 352-6681  
[www.sd8.bc.ca](http://www.sd8.bc.ca)

*well as university transfer courses*

Ph: (250) 352-6601  
[www.selkirk.bc.ca](http://www.selkirk.bc.ca)

### **Academy of Oriental Sciences**

Ph: (250) 352-5887/ 1-888-333-8868  
[www.acos.org](http://www.acos.org)

### **Kootenay School of the Arts**

Ph: (250) 352-2821  
[www.ksac.bc.ca](http://www.ksac.bc.ca)

### **Nelson Waldorf School**

*Private school Kindergarten to Grade 9 & Daycare Centre*  
Ph. (250) 352-6919  
[www.nelsonwaldorf.org](http://www.nelsonwaldorf.org)

### **Nelson University Centre**

*Post-secondary institution, presently not degree-granting*  
Ph: (250) 352-3144

### **Nelson Christian Community School**

*Independent inter-denominational school, Kindergarten to Grade 6*  
Ph: (250) 352-0565  
[www.nelsonccs.org](http://www.nelsonccs.org)

### **Kutenai Art Therapy Institute**

*Post-baccalaureate training program in Art Therapy*  
#201 - 601 Front Street  
Ph: 250-352-2264  
Fax: 250-352-5911  
<http://kati.kics.bc.ca/>

### **St. Joseph's Catholic School**

*Private school Kindergarten to Grade 7*  
Ph: (250) 352-3041  
Fax: (250) 352-9188  
[www.stjosephnelson.ca](http://www.stjosephnelson.ca)

### **Academy of Music**

*Music lessons for various styles, instruments and skills levels*  
737 Baker Street (rear alley entrance)  
Ph: (250)352-9908  
[info@nelsonacademyofmusic.com](mailto:info@nelsonacademyofmusic.com)  
[www.nelsonacademyofmusic.com/](http://www.nelsonacademyofmusic.com/)

### **Selkirk College**

*Courses offered in aviation; career/technology; trades-woodworking; open learning; nursing; music; vocational training; applied business; as*

## ***BUSINESS DEVELOPMENT SERVICES***

### **Corporation of the City of Nelson**

City Hall, Suite 101-310 Ward Street  
Nelson BC V1L 5S4  
Ph: (250) 352-5511  
Fax: (250) 352-2131  
Email: [info@city.nelson.bc.ca](mailto:info@city.nelson.bc.ca)  
[www.city.nelson.bc.ca](http://www.city.nelson.bc.ca)

### **Regional District of Central Kootenay**

202 Lakeside Drive  
Nelson BC V1L 5R4  
Ph: (250) 352-6665  
1-800-268-7325  
Fax: (250) 352-9300  
Email: [info@rdck.bc.ca](mailto:info@rdck.bc.ca)  
[www.rdck.bc.ca](http://www.rdck.bc.ca)

### **Nelson Economic Development Partnership Nelson and District Chamber of Commerce**

225 Hall Street  
Nelson BC V1L 5X4  
Ph: (250) 352-3433  
Fax: (250) 352-6355  
Email: [tom@discovernelson.com](mailto:tom@discovernelson.com)  
[www.discovernelson.com](http://www.discovernelson.com)

### **Community Futures Development Corporation of Central Kootenay**

#201-514 Vernon Street  
Nelson BC V1L 4E7  
Ph: (250) 352-1933  
Fax: (250) 352-5926  
Email: [cfdck@futures.bc.ca](mailto:cfdck@futures.bc.ca) or [info@futures.bc.ca](mailto:info@futures.bc.ca)  
[www.futures.bc.ca](http://www.futures.bc.ca)

### **Kootenay/Rockies Visitor Association**

Box 10, 1905 Warren Ave.  
Kimberley BC V1A 2Y5  
Ph: (250) 427-4838  
Fax: (250) 427-3344  
Email: [info@kootenayrockies.com](mailto:info@kootenayrockies.com)  
[www.kootenayrockies.com](http://www.kootenayrockies.com)

### **B.C. Government Agent**

B.C. Access Centre  
310 Ward Street  
Nelson BC V1L 5S4  
Ph: (250) 354-6104  
Fax: (250) 354-6102



## **FINANCE & INVESTMENT**

### **CHARTERED BANKS**

Bank of Montreal	Phone: 250-352-5321
Canadian Imperial Bank of Commerce	Phone: 250-352-8700
Royal Bank of Commerce	Phone: 250-354-4111
Scotia Bank	Phone: 250-354-5590

### **CREDIT UNIONS**

Kootenay Savings Credit Union – South Slocan	Phone: 250-359-7221
Nelson & District Credit Union	Phone: 250-352-7207

## **GOVERNMENT AGENCIES**

### **Corporation of the City of Nelson**

Phone: 250-352-5511

Services include: fire hall, police, parks & cemetery, electrical utility, water utility, civic centre, library, sewage treatment plant, transit, city building inspection, business licenses, city airport, etc.

### **Regional District of Central Kootenay (RDCK)**

Phone: 250-352-6665

Services provided include: local government to the rural areas surrounding Nelson, including building inspection and planning, fire protection, garbage disposal and recycling, transit, water systems, hospital and economic development.

### **PROVINCIAL AGENCIES**

BC Assessment Authority	Phone: 250-352-5581
Kootenay Regional Geologist	Phone: 250-426-1658
Kootenay Lake Forests District	Phone: 250-825-1100
Water, Land and Air Protection	Phone: 250-354-6333
Gold Commissioner	Phone: 250-354-6104
Health Unit Nelson	Phone: 250-505-7200
West Kootenay Districts Highways Office	Phone: 250-354-6521
Driver Licensing Inquiries	Phone: 1-800-950-1498
Regional Court Registry	Phone: 250-354-6165
Employment and Income Assistance	Phone: 250-354-6488

### **FEDERAL AGENCIES**

Human Resources Development Canada	
Employment services	Phone: 250-352-3155
Employment Insurance	Phone: 1-800-206-7218
Environment Canada Inland	Phone: 250-352-2013
Public Works Canada	Phone: 250-352-3210

## ***HEALTH CARE***

Kootenay Lake Hospital	Phone: 250-352-3111
Nelson & District Home and Community Care	Phone: 250-352-2911
Kootenay Lake Medical Clinic (walk-in 7 days a week)	Phone: 250-352-4666
Medical Associates Clinic (walk-in available)	Phone: 250-352-6611
Mountain Lakes Seniors Community	Phone: 250-352-2600
Jubilee Manor (extended care)	Phone: 250-352-7011
Interior Health Authority (Nelson Health Unit)	Phone: 250-505-7200

## ***SENIORS' SERVICES***

### **Nelson & District Home Support Services**

(Adult Day Care, Homemaking, Meals on Wheels, Personal Emergency Response system, Seniors' Networking, Seniors Peer Counseling)  
Phone: 250-352-2911

### **Nelson & District Community Complex**

(Nifty Fifties, Physio Programs, Senior Fitness Program, Water Aerobics)  
Phone: 250-354-4386

### **Senior Citizens Association Branch 51**

Phone: 250-354-7078

## ***INVESTMENT DEALERS***

Edward Jones Investment: 250-352-0330  
Investors Group Financial Services: 250-352-7777  
BMO Nesbitt Burns: 250-354-1665  
CIBC Wood Gundy: 250-354-4834

## ***HOUSING CONTACTS***

### **Nelson & District Housing Society**

#308-500 West Richards St. Nelson, BC V1L 6C9  
Ph. 250-352-1608  
ndhs@kics.bc.ca

### **Nelson Kiwanis Villa**

#1-700 Gordon Road Nelson, BC V1L 3L8  
Ph: 250-354-4041

## **REAL ESTATE**

### **Coldwell Banker**

593 Baker Street  
Nelson BC V1L 4J1  
Ph: 250-352-3581  
[www.nelsonbcrealestate.com](http://www.nelsonbcrealestate.com)

### **CW Appleyard & Co.**

#106-402 Baker St. Nelson BC V1L 4H8  
Ph: 250-352-7245

### **Nelson Realty Ltd**

433 Josephine Street. Nelson, BC V1L 1W4  
Ph: 250-352-2100  
Fax: 250-352-6888  
[dave@nelsonrealty.ca](mailto:dave@nelsonrealty.ca)  
[www.nelsonrealty.ca](http://www.nelsonrealty.ca)

### **ReMax RHC Realty**

601 Baker Street  
Nelson BC V1L 4J3  
Ph: 250-352-7252  
[info@rhcrealty.com](mailto:info@rhcrealty.com)  
[www.rhcrealty.com](http://www.rhcrealty.com)

### **Valhalla Path Realty**

280 Baker Street Nelson BC V1L 4H3  
Ph: 250-354-4089  
[www.valhallapath.com](http://www.valhallapath.com)

### **Kootenay Real Estate Board**

#208-402 Baker St. Nelson BC V1L 4H8  
Ph: 250-352-5477  
Fax: 250-352-7184  
[kreb@telus.net](mailto:kreb@telus.net)

## **LIBRARIES**

### **NELSON MUNICIPAL LIBRARY**

Mon., Wed.: 11am-8 pm, Tues., Thurs.-Fri., Saturday: 11am-6pm  
602 Stanley Street Nelson BC  
Ph: 250-352-6333  
[library@city.nelson.bc.ca](mailto:library@city.nelson.bc.ca)

### **SELKIRK COLLEGE LIBRARY**

**Nelson Campus** (Resource Centre only)  
Ph: 250-352-6601

### **Castlegar Campus** (open to public)

Ph: 250-365-1229 or 1-888-953-1133 ex.

## RESEARCH WEB SITES

**British Columbia Government:** [www.gov.bc.ca](http://www.gov.bc.ca)

**British Columbia Government Statistics:** [www.bcstats.gov.bc.ca](http://www.bcstats.gov.bc.ca)

**Statistics Canada:** <http://www.statscan.ca>

**BC Publications Index:** [www.publications.gov.bc.ca](http://www.publications.gov.bc.ca)

**eBusiness Connection:** [www.e-bc.ca](http://www.e-bc.ca)

**Canadian Chamber of Commerce:** [www.chamber.ca](http://www.chamber.ca)

**Business Development Bank of Canada:** [www.bdc.ca](http://www.bdc.ca)

**Tourism BC/Rockies Region:** [www.kootenayrockies.com](http://www.kootenayrockies.com)

**Canada/British Columbia Business Services Center:** [www.smallbusinessbc.ca](http://www.smallbusinessbc.ca)

**Canada Exporting:** [www.exportcanada.com](http://www.exportcanada.com)

**Columbia Basin Trust:** [www.cbt.org](http://www.cbt.org)

**Community Futures Development Canada:** [www.futures.bc.ca](http://www.futures.bc.ca)

**Human Resources and Social Development Canada:** [www.hrsdc.gc.ca](http://www.hrsdc.gc.ca)

**Interior Health Authority:** [www.interiorhealth.ca](http://www.interiorhealth.ca)

**BC Innovation Council:** [www.scbc.org](http://www.scbc.org)

**Kootenay Association of Science & Technology:** [www.kast.com](http://www.kast.com)

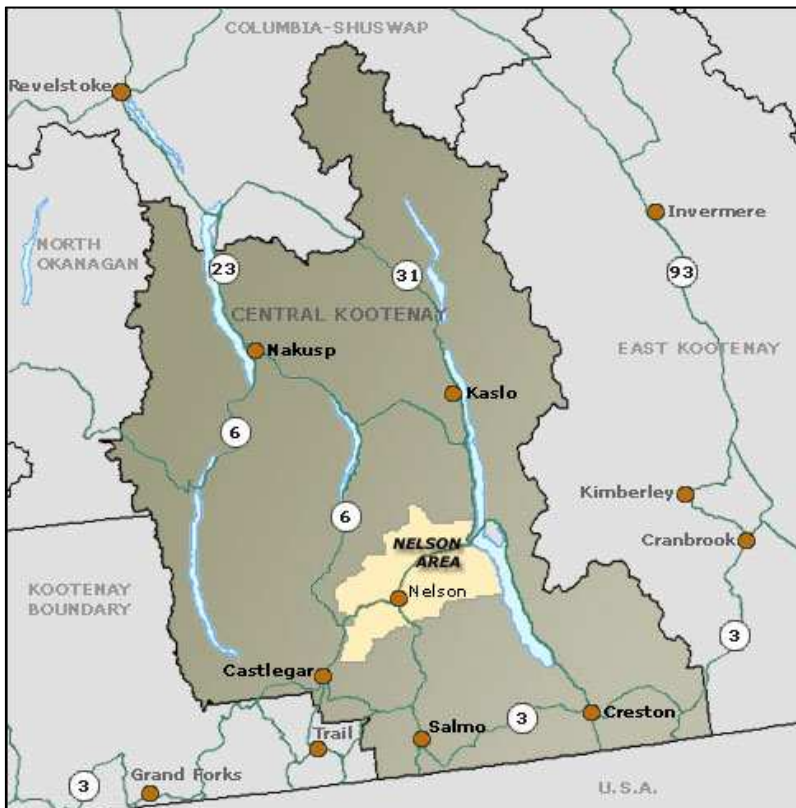
**Revenue Canada:** [www.cra-adr.gc.ca](http://www.cra-adr.gc.ca)

**Western Economic Diversification:** [www.wed.gc.ca](http://www.wed.gc.ca)

**Industry Canada:** [www.strategis.ic.gc.ca](http://www.strategis.ic.gc.ca)

**Small Business Canada:** [www.sbcinfocanada.about.com](http://www.sbcinfocanada.about.com)

We invite you to come and discover the advantages of doing business in the Kootenay region – where opportunity meets lifestyle. For a customized investor package or to learn more about our Ambassador Program, please contact:



### TOM THOMSON

Nelson and District Chamber of  
Commerce  
And  
Nelson and Area Economic  
Development Partnership

225 Hall Street, Nelson

1-877-663-5706

Ph: (250) 352-3433

Web: [www.discoverNelson.com](http://www.discoverNelson.com)

[www.investkootenay.com](http://www.investkootenay.com)

Email: [tom@discoverNelson.com](mailto:tom@discoverNelson.com)